

A  
L  
P  
H

RECORD

*Alphabetical species list*

# Sterling

Account Book

No. 5981

Rulings Carried in Stock

CASH

RECORD

SINGLE ENTRY LEDGER

DOUBLE ENTRY LEDGER

---

Made in U. S. A.

59

LEE O. MILES  
COLLECTION

[Faint, illegible markings]

[Faint, illegible handwriting on lined paper]

M

HS Core & water to m.  
10/29/51

10/30/51

Shell Bench -

- #1 Laminaria andersoni
- 2 Epi. or Para. on Egregia
3. Green mat
4. Constantine
5. Coralline
6. Pionosia "in fruit"
7. " "
8. Epiphytic or Pionosia
9. Coralline
10. " "
11. " "

all zone 3-4 - at 0.0"

Rock to S of path -

x Shell only.

To Japan

11A

*Astraea unguis*  
May 5 Gu 28

Wood

*Acanthina muricata*  
Gu 27

Broderip

x *Arca grandis*  
San Blas 1

Broderip & Sby

*Architectonica nobilis*  
Gu 22

21 Oct 54

Lamarck  
Roding

*Agaronia testacea*  
Gu 13-15 19 Dec 53

Lamarck

*Acanthina lequibus*

En 9 BC 16 En 5 8

Sby

*Arca solida*  
Gu 23

Sby

*Anomalocardia subrugosa*  
Gu 31

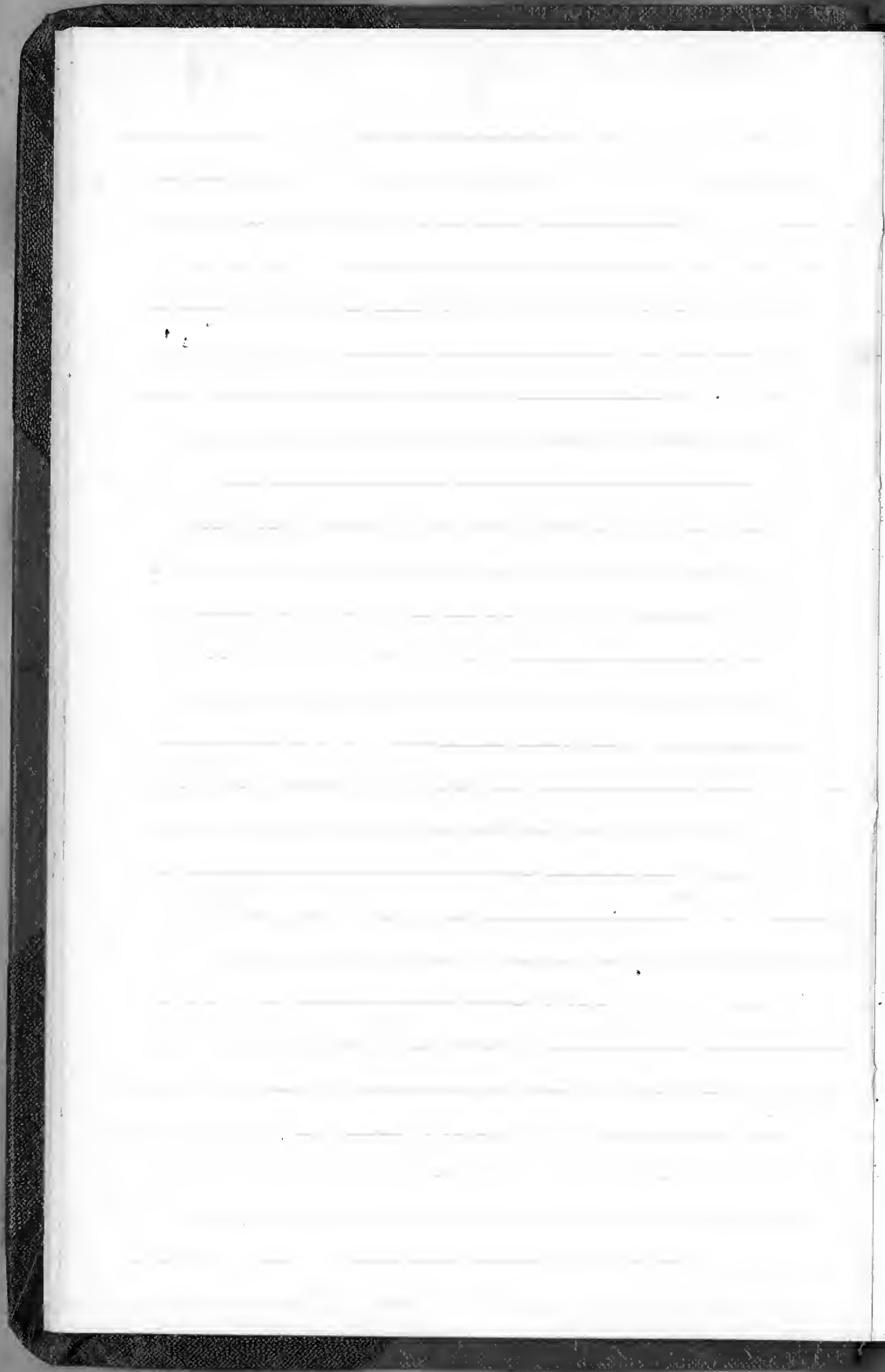
12/7/54

Wood

*Acanthina angelica*  
SC 1 - 26

*Anochis varna*  
SC 3

Sowerby





*Bulla gouldiana* Pils.  
 5018 Gu 26 27 Dec 54

*Balanophyllia elegans*  
 Coral. HV Brogg. M161 6/5/51

*Bulinus dealbatus* Say  
 Crawl Key, Flor 10/5/50

*Bulla occidentalis* C. B. Adams  
 Key Largo 9/27/50

Bay Biscayne pyramid - Dillwyn  
 LML 9 Munks Id

C

*Cerion incana*

Berlin,

Crowl Key, Flot.

10/5/50

(Found)

Conoc - See "13"

Calloporina (see Turbo)

Crepidula onyx Sby -  
BC 19 San Juan 4/19/51

Cassia centrifugata Valm  
or C. abbreviata Lamour

Topo. 1 29 Nov 53

Cassia coarctata woods -  
May 9

Conus ximenes Gray -  
Jun 11-13 16 Dec 53

Conus regularis Sby -  
SC 35 12 Apr 52

Cerithium stercus-muscarum Valm  
SC 3

Crucibulum imbricatum <sup>prod.</sup> Sby -  
Jun 4-6

Crucibulum spinosum Sby -  
Jun 31 7 Dec 54

Calyptrea fastigata Gould -  
SC 41

*Chione girdia* Brod.  
Topo 1 1/2 Felipe 25

*Conus nux* Hwa  
May 9

*Cyprina arabicula* Lo Monaco  
May 5 1/5/53

*Cyprina anethi* Dall  
Jun 10 14 Dec 53

*Chama echinata* Brod.  
May 7-10-8 6 Nov 54

*Cardium procerum* Sby  
Jun 9-10-11 12/15/53

*Cardita officina Californiana* Deshayes  
May 9-10 11-8-54

*Chione californensis* Brod.  
Jun 20 12/7/54

*Calliostoma palmeri* Dall  
Jun 14

*Chama pelleri* Brod.  
BC. 14 4/14/51

*Calliostoma annulatum*  
M 191 Huxley

*Dosinia dunkeri*  
ju 9-22-32

Philippi

*Donax punctostriatus*  
San Blas 1 8 Dec '33

Harley

*Donax* <sup>uvicola</sup> ~~uvicola~~  
San Blas 6 23 Nov '54

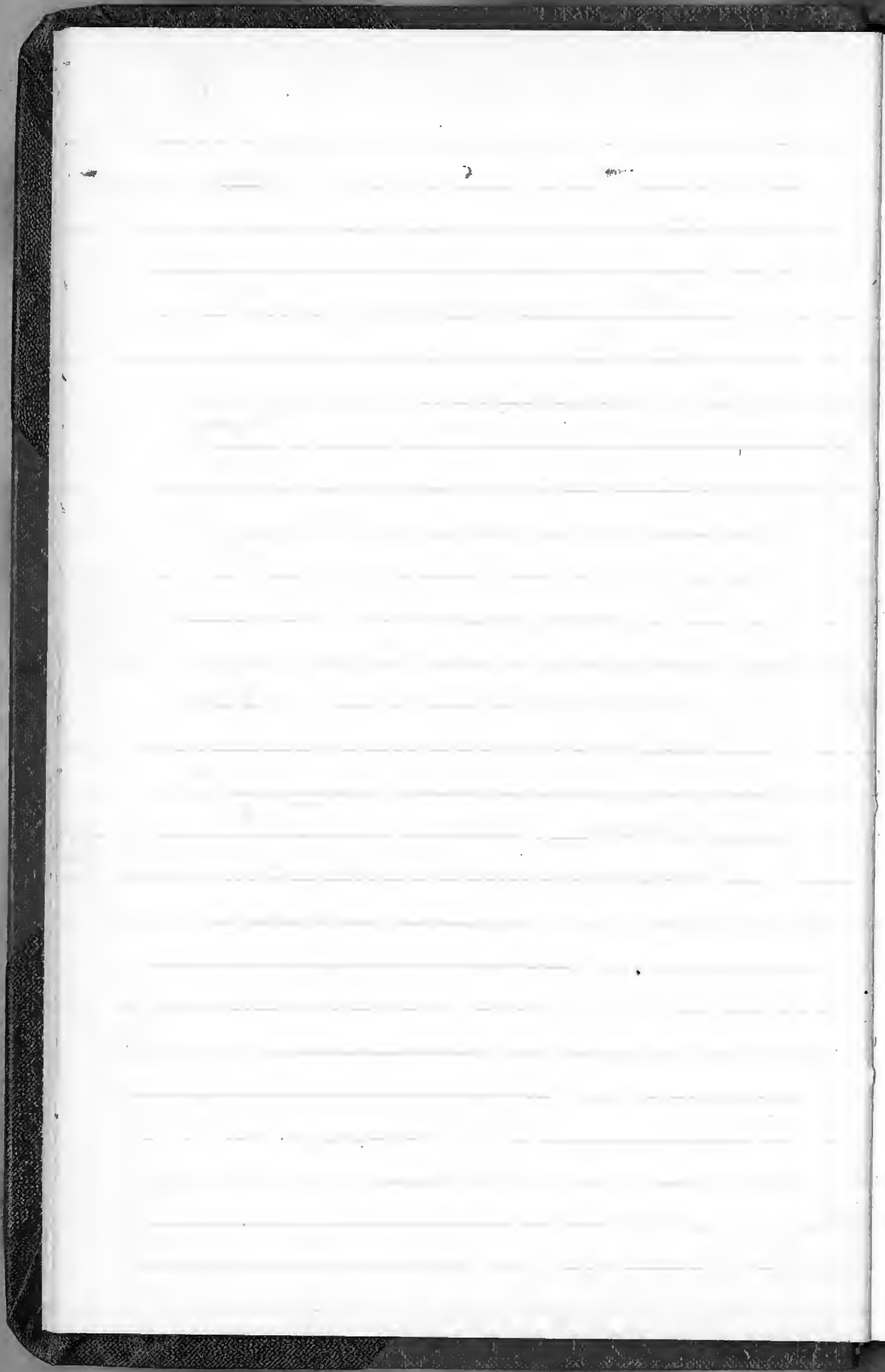
Harley  
Sby

*Discinisa strigata*  
May 5' 11/52

Brod.

x *Dosinia ponderosa* Gray  
SC 42 San Felipe 4/26/52

*Neodora aspera* Esch.  
M 194 St. Juan 1/23/52  
L. J. J. J.

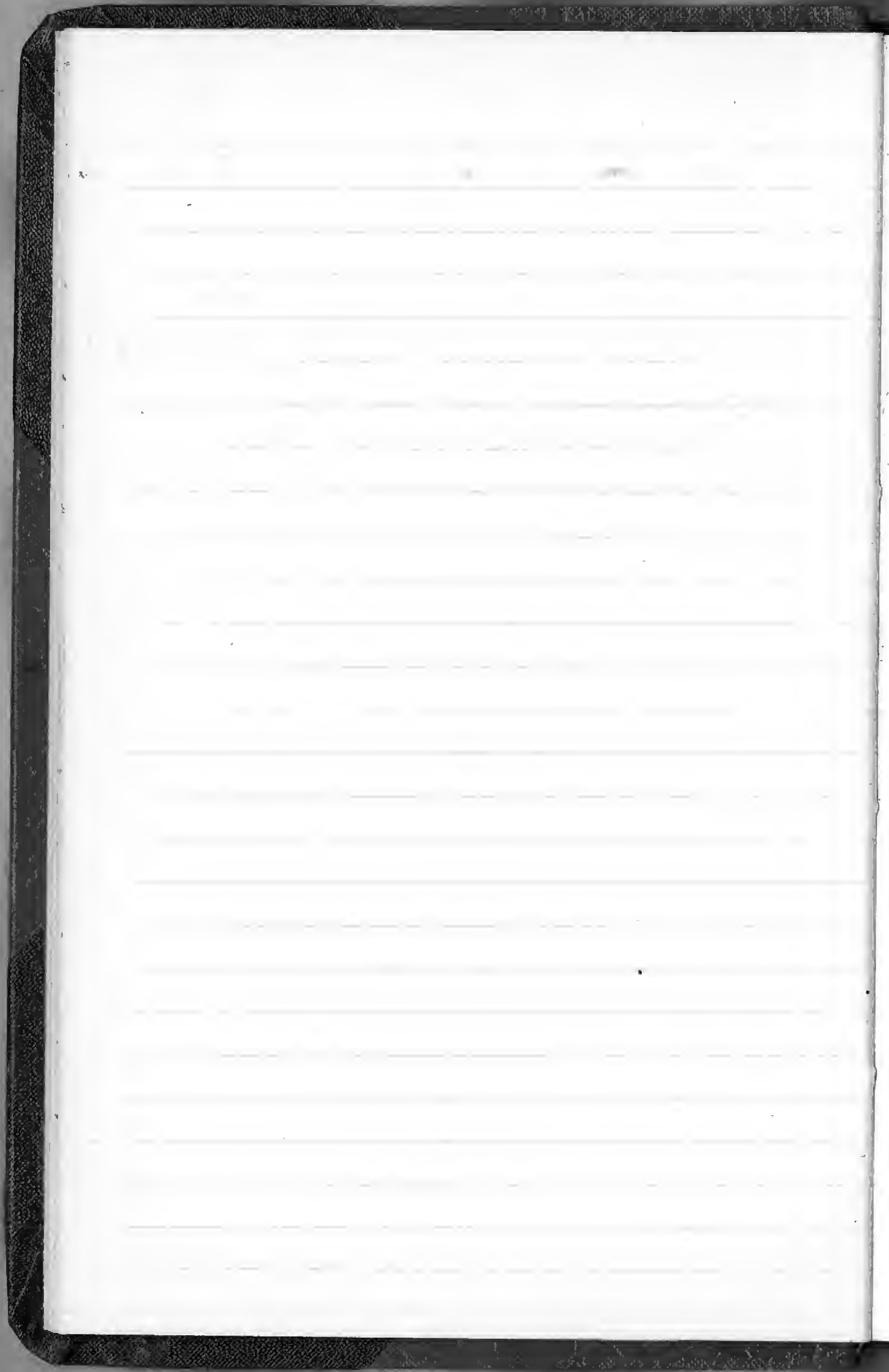


E

*Euplexura*<sup>a</sup> *marisiformis* Brod  
Gu 12-14 7-Dec. 54

*Eunaticina* *oldroydi* - Bull  
M 184 8/6/51 off Run. R. 5<sup>th</sup> fall

*Euglandina* *roosa* Fed.



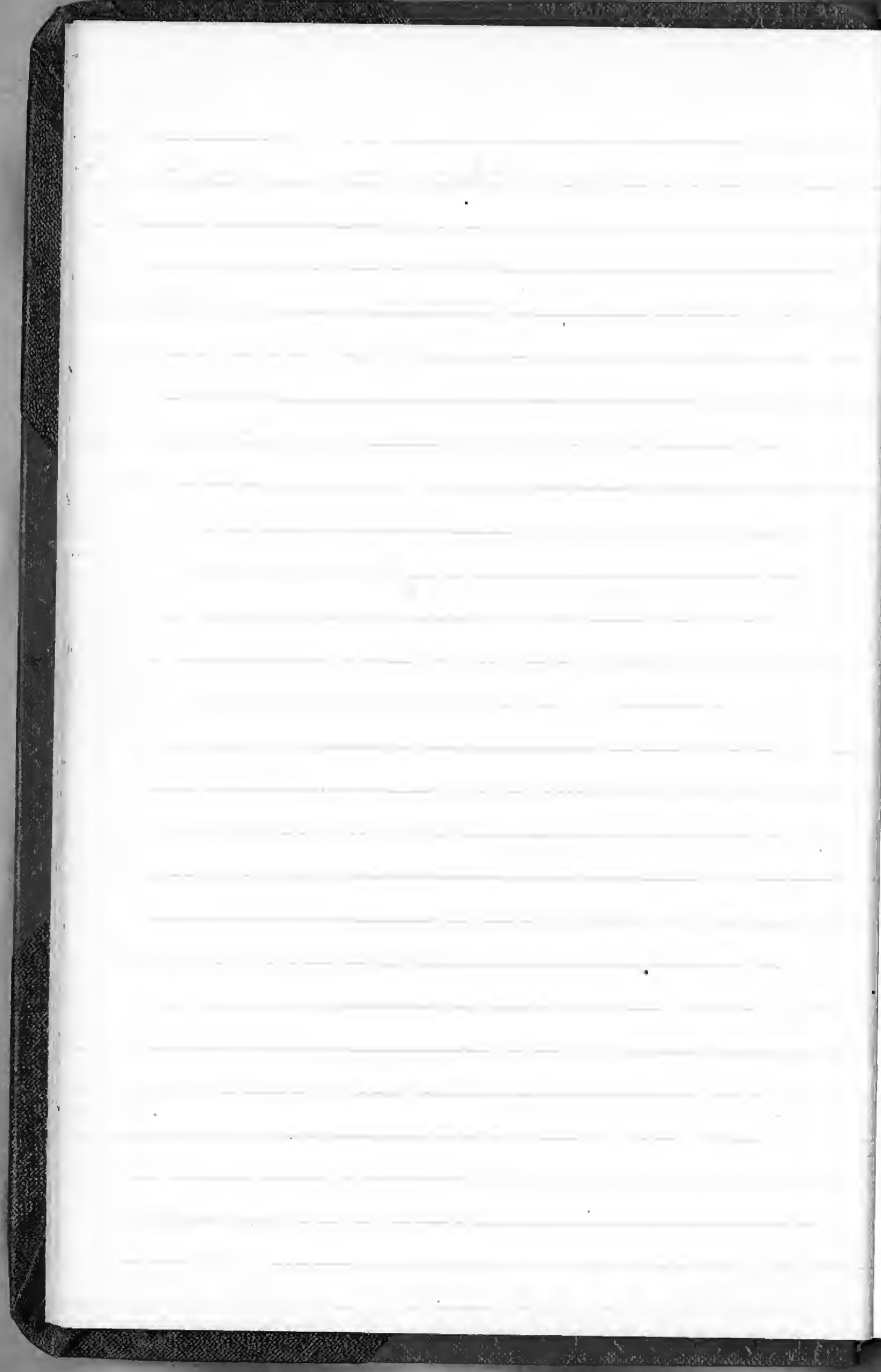


*Ficus dupetitihouarsi* - Kiener  
 Ju 9

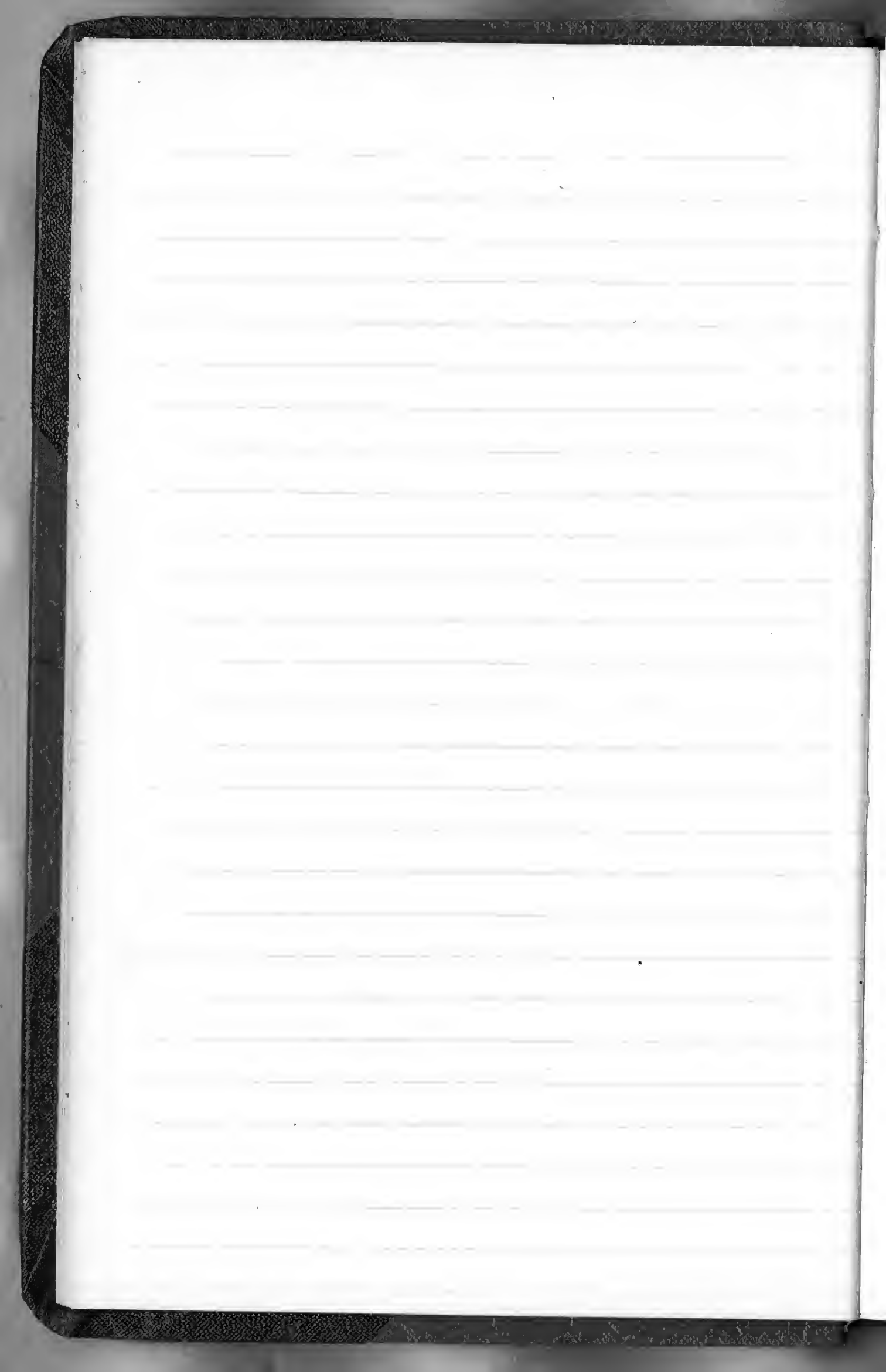
X *Ficus ventricostus* Sowerby  
 Eu. Lopez 11/29 Shell only  
 5/53

*Fusinus maculosum* Kiener  
 May 3 Ju 28

*Fissurella volcano* Reave  
 BC 25 5-2-52



9



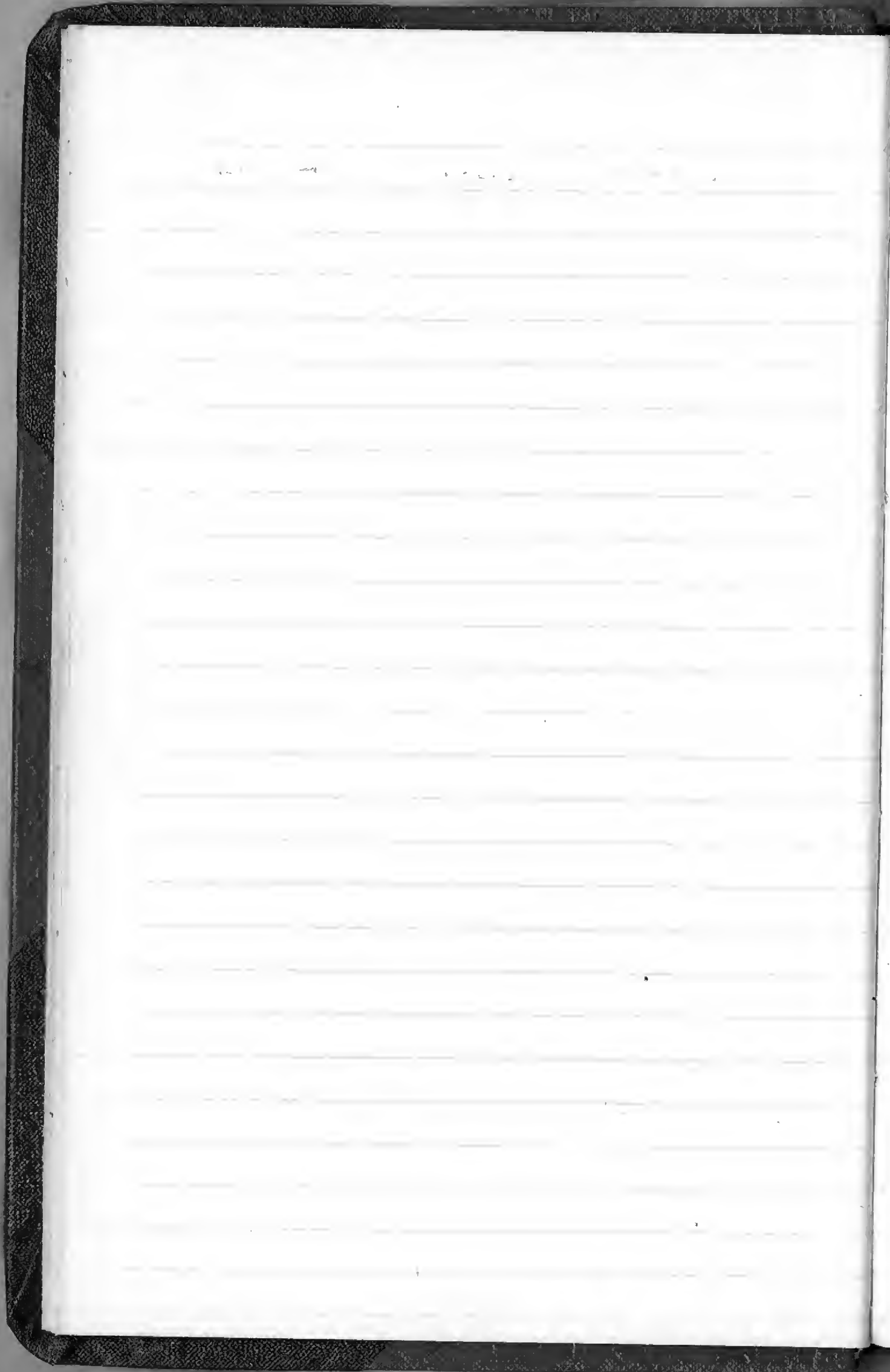
H

*Hammelia strangi*  
SE 13-34-79

Baker

*Hammelia viscosa*  
Eu. 2-3 - 5/4/52

Sty

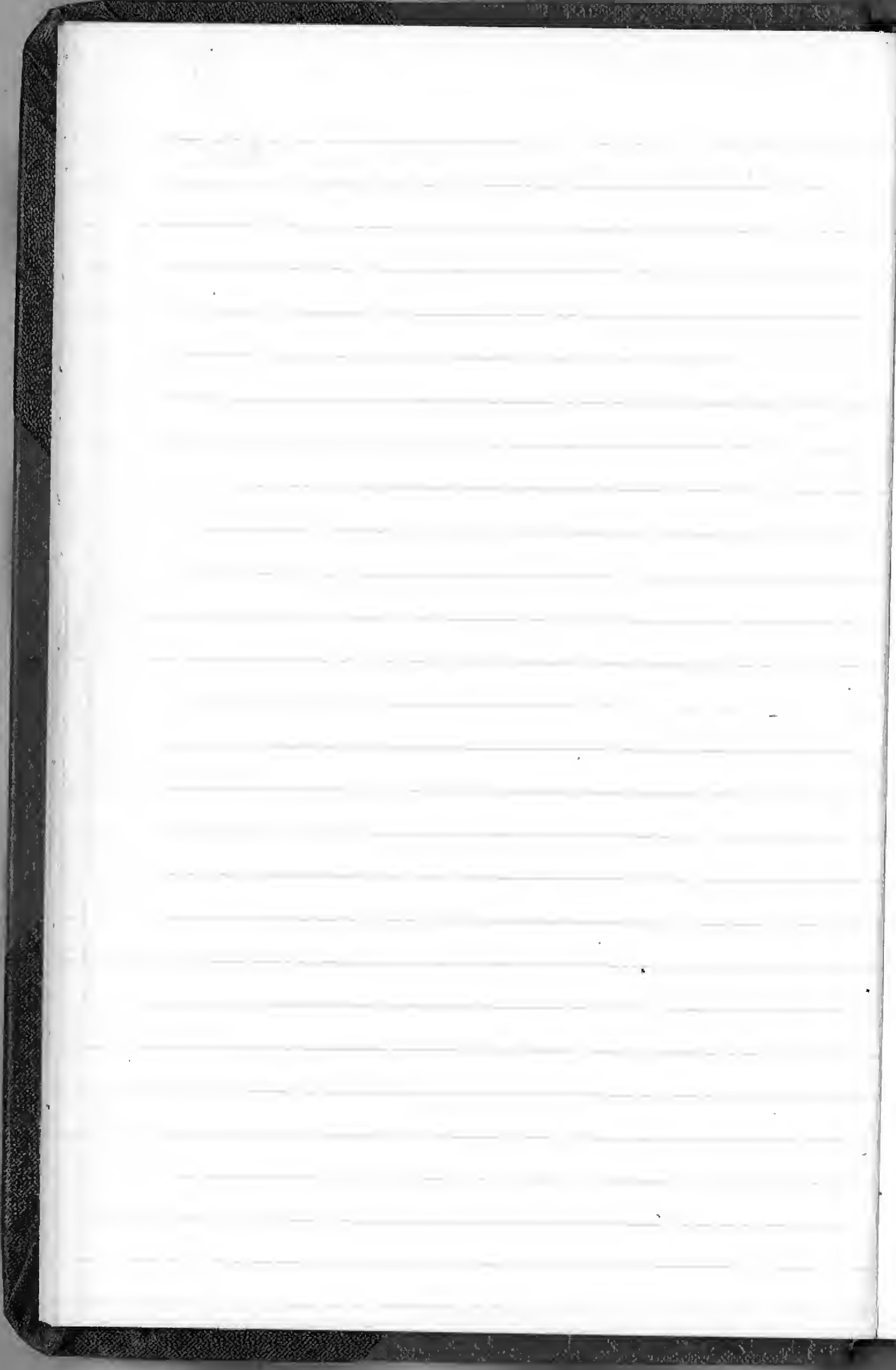


J

*Imoclovia pambertoni* Lowe  
Baker

ju 79

10-31-52





g

*Juntheca juntheca*  
Florida. JFM 44



K

Reyfostru lallu  
SC 29 7/5/52

[Faint, illegible handwriting on lined paper, possibly bleed-through from the reverse side of the page.]

x *Lonicardia elatum* sty  
SC 41

x *Ligustrum fasciculatum*  
Proc. Calif. Acad. Sci. 44: 1936



*Murex erythrostroma* Swainson  
Gu 22 10/21/54 See *Phyllonotus bicolor* VAL. -

x *Murex brassica* Lamarck  
Acapulco

*Modiola* - See *Volsella*

*Megapitaria squallida* Sby  
Gu 10 - 23

*Melanguena patula* Brod. & Sby  
Gu 22 - 12

*Murex* <sup>radix</sup> *nigrita*?  
Ew. S. Felipe SC 32

*Murex triolatus*  
En 3 4/14/52

*Macron keuletti* Adams  
San Juan 3 4-8-49

*Murex recurvirostris lividus* Gray  
SC 43 Gu IV Oct 52

Mitrella lens Wood

May 9 Bu 100

~~7~~ Macrella chelata Gray  
Sm 136 5

Macrocallesta <sup>n</sup> sinuosa Sol.  
Marco Bu 47



*Notica chemnitzii*  
Gu 32 22 Oct. 54

Pfeiffer

*Notica bifasciata*  
SC 33 Gu 13 17 Dec 53

Gray

*Merita scabrivata*  
Gu 23 12/23/54

Lattin

*Meritina luteofasciata*  
Gu 9-10

Miller

*Meritina reclinata*  
Florida LM 72-50 10/16/50

Say



0

*Olivina spicata* - Boulton  
Ju 32

*Olivina incrossata* - Solen  
or *O. angula* - Lamarck  
SC 36 Ju 30-32

*Ostrea angelica* - Poch.  
SC 10-32 4/10/52

*Ostrea corteziana* - Hertlein  
Ju 29

*Olivella dama* - Murel  
Ju 33

*Olivella undatella* - Lamarck  
Muz 12

*Acmaea paulsoni* - Cary.  
En 5 15-6-52

1870-1871

*Polinices reclusianus* - Deshayes  
SC 41

*Pitar* ~~*alternatus*~~ *alternatus* - Kenyon  
~~SC 5-6~~ SC 6

*Protothaca grata* . Say  
Ju 6 - 9 - 9A - 3 12-13-53

*Pinna*  
Ju 31 A

*Pinna*  
Ju 31 B 31 Oct 55

*Polinices uber* Valen.  
Ju 42 - 12 12/16/53

*Pteria sterna* Gould  
SC 22 3-5-52

*Phyllonotus bicolor* Valen.  
*De Nuxes erythroclonus* Swain

x *Pinctada mazatlanica* Stanley  
31 Oct 55 Ju 29

- *Pitar lupinaria* Lesson  
Ju 76 10/17/54

- *Pteronotus* (*Purpura*)  
*foliatus* Gmelin  
M 194 2-4-55 Slacks Pt.  
Eu 5

- *Pyrene foveata* Slay  
Ju 33 (Nov 9-10)

- *Pyrene major*  
Ju 14

- x *Pecten turnulogensis* Alcub.  
3056 11-25-54

Q





R



*Strombus gracilior* Sowerby  
Gu 32 12/8/54

\* *Strombus granulatus* Gray  
Gu 22 23 Dec 54

*Solenostearia pallida* Brod. & Sbr.  
SB, Gu, S.C. 6 Dec 54

*Sinum debile* Gould  
SC 30

\* *Strombus ~~granulatus~~ <sup>galeatus</sup>* Sowerby  
Gu 28

*Solidum nuttalli* Conrad  
M 156 9-26-51

*Solen rosaceus* Carp  
SC 6-20

*Spondylus Calceus* Carp

2/1/1

T

*Turritella gonostoma* - Valens.  
Ju 5-6-4-8-13-15 12/19/53

*Turbo fluctuosum* Wood (Calliopoma)  
Ju 7-10-13 17/17/53

*Triumphis subrotata* Wood  
In Bls 1-2 12-8-53

*Tegula rugosa* A. Adams  
Ju 33 20 Oct 54

*Tegula marianae* Dall  
Ju 7 SC 48

*Thais patula parva* Gould  
Th  
May 1-3-4 12/1/53

*Thais truncatilis* Blainville  
Ju 1-23 Oct 23, 54

*Thais* 9/9 *T. haemostoma* Fernald  
May 12

*Tegulus californianus* Conrad  
Ju 15 Ex 10 5/15/51 19 Dec 53

✓ *Iivela byronensis* — Gray  
subsp. *hindii* — Handley  
May 1 SFBs 11/6/54

— *Iivacula maculosa* Sby  
Sc 7

— *Iivula* of *I. variegata* Gray.  
Sc 25

✓ *Tagelus affinis longicinctus*  
En 10. 5-15.52 Pils. Flor

— *Thais emarginata* Deshayes.  
En. L 4/10/50

— *Iivina columba* Sby  
MAZ. 11-6-54

— *Thais lamellosa* Gmelin  
M 223 SFBs 1/6/54

— *Iivina californica* Gray  
11-6-54 May 7

— *Tellina annulata*  
SFBs OBadon

— *Thais hirsutoma vesicicola* Blain  
May 11

T AE

*Terebra dislocata* Say  
Key MARCO I's. 5/16/59

*Legula fasciata* - Born  
Grassy Key. LM 30





Volcella guyanensis  
SC 26 4-2-52

V  
(Mordella)  
La Mota

Venus pulicaria  
SC 20 3/6/52

Brook.



W



X



4





9

Gonaria spidicea  
Ex. 4/14/49

Swainson





